

CONTENTS

产品目录

- 01 斜边机系列**
BEVELING MACHINE SERIES
斜边磨轮系列 / Beveling Machine Grinding Wheel Series
斜边机配件系列 / Beveling Machine Spare Parts Series
PAGE 01—06
- 02 双边机系列**
DOUBLE EDGER SERIES
双边机磨轮系列 / Double Edger Grinding Wheel Series
双边机配件系列 / Double Edger Spare Parts Series
PAGE 07—09
- 03 直边机系列**
EDGING MACHINE SERIES
直边机磨轮系列 / Edging Machine Grinding Wheel Series
直边机配件系列 / Edging Machine Spare Part Series
PAGE 10—13
- 04 异形机系列**
SHAPE EDGE BEVELING MACHINE SERIES
PAGE 14—18
- 05 钻孔机系列**
DRILLING MACHINE SERIES
PAGE 19
- 06 清洗机系列**
WASHING MACHINE SERIES
PAGE 20
- 07 喷砂机配件系列**
SANDBLASTING MACHINE SPARE PARTS SERIES
PAGE 21

- 08 机械配件系列**
MACHINE SPARE PARTS SERIES
PAGE 22
- 09 电动工具系列**
ELECTRIC TOOLS SERIES
PAGE 23
- 10 刀具系列**
CUTTING TOOL SERIES
PAGE 24—25
- 11 吸盘工具系列**
SUCKING TOOLS SERIES
PAGE 26—27
- 12 无影胶系列**
UV GLUE SERIES
PAGE 28
- 13 工具系列**
TOOL SERIES
PAGE 29—30

01 斜边机系列 BEVELING MACHINE SERIES 斜边磨轮系列 / BEVELING MACHINE GRINDING WHEEL SERIES



X001 进口斜边机钢轮
Import bevel diamond wheel
规格/SIZE : 150×8×10(mm) 外齿(Outer segment)
孔径/HOLE : 12mm, 22mm, 50mm
目数/MESH : 80#, 120#, 140#, 180#



X002 进口斜边机钢轮
Import bevel diamond wheel
规格/SIZE : 150×8×10(mm) 外齿(Outer segment)
孔径/HOLE : 12mm, 22mm, 50mm
目数/MESH : 80#, 120#, 140#, 180#



X003 进口斜边机钢轮
Import bevel diamond wheel
规格/SIZE : 150×8×10(mm)
孔径/HOLE : 12mm, 22mm, 50mm
目数/MESH : 80#, 120#, 140#, 180#



X004 斜边机钢轮(A型)
Bevel diamond wheel (Type A)
规格/SIZE : 150×8×10(mm) 外齿(Outer segment)
孔径/HOLE : 12mm, 22mm, 50mm
目数/MESH : 80#, 120#, 140#, 180#



X005 斜边机钢轮(A型)
Bevel diamond wheel (Type A)
规格/SIZE : 150×8×10(mm)
孔径/HOLE : 12mm, 22mm, 50mm
目数/MESH : 80#, 120#, 140#, 180#



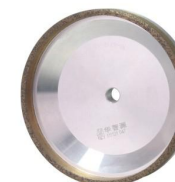
X006 斜边机钢轮(B型)
Bevel diamond wheel (Type B)
规格/SIZE : 150×8×10(mm) 外齿(Outer segment)
孔径/HOLE : 12mm, 22mm, 50mm
目数/MESH : 80#, 120#, 140#, 180#



X007 斜边机钢轮(B型)
Bevel diamond wheel (Type B)
规格/SIZE : 150×8×10(mm) 外齿(Outer segment)
孔径/HOLE : 12mm, 22mm, 50mm
目数/MESH : 80#, 120#, 140#, 180#



X008 斜边机钢轮(B型)
Bevel diamond wheel (Type B)
规格/SIZE : 150×8×10(mm) 外齿(Outer segment)
孔径/HOLE : 12mm, 22mm, 50mm
目数/MESH : 80#, 120#, 140#, 180#



X009 斜边机钢轮(C型)
Bevel diamond wheel (Type C)
规格/SIZE : 150×5×12(mm)
孔径/HOLE : 12mm, 22mm, 50mm
目数/MESH : 80#, 120#, 140#, 180#

01 斜边机系列
BEVELING MACHINE SERIES

斜边磨轮系列 / BEVELING MACHINE GRINDING WHEEL SERIES



X010 进口斜边机树脂轮
Import bevel resin wheel

规格/SIZE : 150×20×12(mm) 水槽 (water channel)
孔径/HOLE : 12mm , 22mm
型号/MESH : 3# , 4# , 5# , 6# , 7#



X011 进口斜边机树脂轮
Import bevel resin wheel

规格/SIZE : 150×15×12(mm)
孔径/HOLE : 12mm , 22mm
型号/MESH : 3# , 4# , 5# , 6# , 7#



X012 斜边机树脂轮
Bevel resin wheel

规格/SIZE : 150×20×12(mm) 水槽 (water channel)
孔径/HOLE : 12mm , 22mm
型号/MESH : 3# , 4# , 5# , 6# , 7#



X013 斜边机树脂轮
Bevel resin wheel

规格/SIZE : 150×15×12(mm)
孔径/HOLE : 12mm , 22mm
型号/MESH : 3# , 4# , 5# , 6# , 7#



X014 斜边机树脂轮
Bevel resin wheel

规格/SIZE : 150×15×12(mm)
孔径/HOLE : 12mm , 22mm
型号/MESH : 3# , 4# , 5# , 6# , 7#



X015 斜边机树脂轮
Bevel resin wheel

规格/SIZE : 150×15×12(mm)
孔径/HOLE : 12mm , 22mm
型号/MESH : 3# , 4# , 5# , 6# , 7#



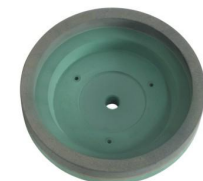
X016 斜边机树脂轮
Bevel resin wheel

规格/SIZE : 150×15×12(mm)
孔径/HOLE : 12mm , 22mm
型号/MESH : 3# , 4# , 5# , 6# , 7#



X017 斜边机树脂轮
Bevel resin wheel

规格/SIZE : 150×15×12(mm)
孔径/HOLE : 12mm , 22mm
型号/MESH : 3# , 4# , 5# , 6# , 7#



X018 斜边机树脂轮(磨花边和马赛克)
Bevel resin wheel (grinding decorative border & mosaic)

规格/SIZE : 150×12×10(mm)
孔径/HOLE : 12mm , 22mm
型号/MESH : 3# , 4# , 5# , 6# , 7#

01 斜边机系列
BEVELING MACHINE SERIES

斜边磨轮系列 / BEVELING MACHINE GRINDING WHEEL SERIES



X019 斜边机树脂轮
Bevel resin wheel

规格/SIZE : 150×15×10(mm)
孔径/HOLE : 12mm , 22mm
目数/MESH : 3# , 4# , 5# , 6#



X020 进口10S水松轮
Import 10S polish wheel

规格/SIZE : 150×70×40(mm)
规格/SIZE : 150×70×30(mm)
目数/MESH : 10S40 , 10S60 , 10S80



X021 进口10S水松轮
Import 10S polish wheel

规格/SIZE : 150×70×10×40(mm)
目数/MESH : 10S40 , 10S60 , 10S80



X022 进口羊毛轮(A型)
Import felt wheel (Type A)

规格/SIZE : 150×70×35(mm)
规格/SIZE : 150×105×35(mm)



X023 进口羊毛轮(B型)
Import felt wheel (Type B)

规格/SIZE : 150×70×35(mm)
规格/SIZE : 150×105×35(mm)



X024 羊毛轮
Felt wheel

规格/SIZE : 150×70×35(mm)
规格/SIZE : 150×105×35(mm)



X025 带抛光羊毛轮
Felt wheel with cerium oxide powder

规格/SIZE : 150×70×35(mm)
规格/SIZE : 150×105×35(mm)



X026 羊毛轮
Felt wheel

规格/SIZE : 185×140×25(mm)



X027 羊毛轮
Felt wheel

规格/SIZE : 185×115×35(mm)

01 斜边机系列
BEVELING MACHINE SERIES

斜边机配件系列 / BEVELING MACHINE SPARE PARTS SERIES



X028 斜边机前压板
Bevel front pad
规格/SIZE : 六件套(6 pcs set)



X029 斜边机前压板胶套
Bevel front pad rubber



X030 斜边机前压板
Bevel front pad



X031 斜边机大铁夹
Bevel iron clamp



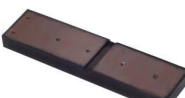
X032 斜边机弹簧片
Bevel coach spring



X033 斜边机后压板
Bevel back pad
规格/SIZE : 可来样定做
(can order via sample)



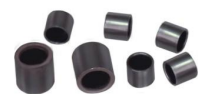
X034 斜边机后压板
Bevel back pad
规格/SIZE : 可来样定做
(can order via sample)



X035 斜边机后压板
Bevel back pad
规格/SIZE : 可来样定做
(can order via sample)



X036 大铁夹轮子
Wheel for metal slide



X037 钢套
Steel bushing



X038 数字显示器
Number readout



X039 万向水管
Universal water pipe



X040 棚架轮
Wheel on support track



X041 棚架螺丝
Screw on support track



X042 斜边机铁链条
Bevel machine iron chain

01 斜边机系列
BEVELING MACHINE SERIES

斜边机配件系列 / BEVELING MACHINE SPARE PARTS SERIES



X043 纯白色抛光粉
Polish powder
(clear white color)



X044 白色抛光粉
Polish powder
(white color)



X045 红色抛光粉
Polish powder
(orange color)



X046 斜边机防水套
Bevel machine water
proof cover
规格/SIZE : 160×70(mm)



X047 斜边机防水套
Bevel machine water
proof cover
规格/SIZE : 130×70(mm)



X048 意大利斜边机防水套
Italy bevel machine's
water proof cover



X049 斜边机防水套
Bevel machine water
proof cover
规格/SIZE : 120×70(mm)



X050 斜边机花键轴
Bevel machine
spline shaft



X051 微调刻度数字手柄
Handle wheel with
numerical indicator



X052 斜边机压板螺丝
Bevel machine pad screw



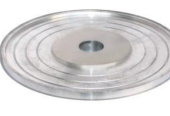
X053 斜边同步带
Bevel machine belt
规格/SIZE : 各规格可定做
(Each size can order)



X054 斜边同步带
Bevel machine belt
规格/SIZE : 各规格可定做
(Each size can order)



X055 斜边机铝座
Bevel machine alu. base
规格/SIZE : 各规格可定做
(Each size can order)



X056 斜边机铝盘
Bevel machine alu. plate
孔径/HOLE : 12mm , 22mm
外径/HOLE : 150mm , 130mm



X057 毛刷
Brush
规格/SIZE : 8mm/10mm

02 双边机系列 DOUBLE EDGER SERIES

双边机磨轮系列 / DOUBLE EDGER GRINDING WHEEL SERIES



S001 双边机金钢轮(A型)
Double edger diamond wheel (Type A)

规格/SIZE	孔径/HOLE	目数/MESH
150(175)×15×10(mm) 全齿 (Full segment)	50mm, 12mm	100#, 140#
150×8×10(mm) 内齿 (Inner segment)	50mm, 12mm	140#, 170#
150×8×8(mm)	50mm, 12mm	230#



S002 双边机金钢轮(A型)
Double edger diamond wheel (Type A)

规格/SIZE	孔径/HOLE	目数/MESH
150×12×8(mm) 外半齿 (Outer segment)	50mm, 12mm	100#
150×8×8(mm)	50mm, 12mm	140#, 180#, 230#



S003 双边机金钢轮(B型)
Double edger diamond wheel (Type B)

规格/SIZE	孔径/HOLE	目数/MESH
150(175)×15×10(mm) 全齿 (Full segment)	50mm, 12mm	100#, 140#
150×8×10(mm) 内齿 (Inner segment)	50mm, 12mm	140#, 170#
150×8×8(mm)	50mm, 12mm	230#



S004 双边机倒角金钢轮(A型)
Double edger aris diamond wheel (Type A)

规格/SIZE : 130×8×8(mm)
孔径/HOLE : 12mm, 50mm
目数/MESH : 180#, 240#



S005 双边机倒角金钢轮(A型)
Double edger aris diamond wheel (Type A)

规格/SIZE : 130×8×8(mm)
孔径/HOLE : 12mm, 50mm
目数/MESH : 180#, 240#



S006 双边机倒角金钢轮(B型)
Double edger aris diamond wheel (Type B)

规格/SIZE	孔径/HOLE	目数/MESH
130×10×10(mm)	50mm, 12mm	180#, 240#
130×8×8(mm)	50mm, 12mm	180#, 240#



S007 双边机倒角金钢轮(C型)
Double edger aris diamond wheel (Type C)

规格/SIZE : 130×8×8(mm)
孔径/HOLE : 12mm, 50mm
目数/MESH : 180#, 240#

02 双边机系列 DOUBLE EDGER SERIES

双边机磨轮系列 / DOUBLE EDGER GRINDING WHEEL SERIES



S008 双边机树脂磨轮(A型) 颜色(红/绿)
Diamond edger resin wheel (Type A) Color (red/green)

规格/SIZE	孔径/HOLE	目数/MESH
150(130)×15×10(mm)	12mm, 50mm	180#, 240#, 320#
150(130)×15×12(mm)	12mm, 50mm	180#, 240#, 320#
150(130)×15×15(mm)	12mm, 50mm	180#, 240#, 320#
150(130)×20×10(mm)	12mm, 50mm	180#, 240#, 320#



S009 双边机树脂磨轮(B型) 颜色(红/绿)
Double edger diamond wheel (Type B) Color (red/green)

规格/SIZE	孔径/HOLE	目数/MESH
150(130)×15×10(mm)	12mm, 50mm	180#, 240#, 320#
150(130)×15×12(mm)	12mm, 50mm	180#, 240#, 320#
150(130)×15×15(mm)	12mm, 50mm	180#, 240#, 320#
150(130)×20×10(mm)	12mm, 50mm	180#, 240#, 320#



S010 双边机树脂磨轮(A型) 颜色(红/绿)
Diamond edger resin wheel (Type A) Color (red/green)

规格/SIZE : 150(130)×10×10(mm)
孔径/HOLE : 12mm, 50mm
目数/MESH : 180#, 240#, 320#



S011 双边机树脂磨轮(B型) 颜色(红/绿)
Diamond edger resin wheel (Type B) Color (red/green)

规格/SIZE : 150(130)×10×10(mm)
孔径/HOLE : 12mm, 50mm
目数/MESH : 180#, 240#, 320#



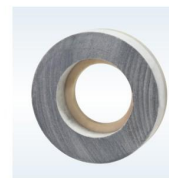
S012 进口BK 双边机倒角金钢轮 (Type C)

规格/SIZE : 150×70×40(mm)
规格/SIZE : 130×60×35(mm)
目数/MESH : 46#, 60#, 120#, 180#



S013 BK BK polish wheel

规格/SIZE : 150×70×40(mm)
规格/SIZE : 130×60×35(mm)
目数/MESH : 46#, 60#, 120#, 180#



S014 进口CE-3 Import CE-3

规格/SIZE : 150×70×40(mm)



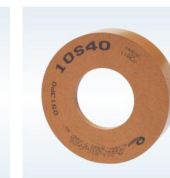
S015 CE-3

规格/SIZE : 150×70×40(mm)
规格/SIZE : 150×60×35(mm)



S016 CMA-3

规格/SIZE : 150×70×40(mm)



S017 进口10S水松抛光轮 Import 10S polish wheel

规格/SIZE : 150×70×40(mm)
150×70×30(mm)
130×60×35(mm)
目数/MESH : 46#, 60#, 80#



S018 10S水松抛光轮 10S polish wheel

规格/SIZE : 150×70×40(mm)
150×70×30(mm)
130×60×35(mm)
目数/MESH : 46#, 60#, 80#

02 双边机系列 DOUBLE EDGER SERIES

斜边机配件系列 / BEVELING MACHINE ACCESSORIES SERIES



S019 双边机防水套
Double edger water proof cover



S020 双边机防水套
Double edger water proof cover



S021 万向水管
Universal water pipe
规格/SIZE:
大Big, 中Middle, 小号Small



S022 双边机滑块
Double edger slide block



S023 双边机轨道
Double edger track



S024 双边机轨道
Double edger track



S025 尼龙块
Grontone



S026 双边机靠轮
Double edger support wheel
规格/SIZE: 各规格可定做
(Each size can order)



S027 双边机压轮
Double edger press wheel
规格/SIZE: 各规格可定做
(Each size can order)



S028 双边机靠轮
Double edger support wheel
规格/SIZE: 各规格可定做
(Each size can order)



S029 双边机压轮
Double edger press wheel
规格/SIZE: 各规格可定做
(Each size can order)



S030 双边机靠轮螺丝
Double edger support wheel screw



S031 同步带
Double edger belt
规格/SIZE: 各规格可定做
(Each size can order)



S032 同步带
Double edger belt
规格/SIZE: 各规格可定做
(Each size can order)



S033 同步轮
Synchronous wheel
规格/SIZE: 各规格可定做
(Each size can order)

03 直边机系列 EDGING MACHINE SERIES

直边机磨轮系列 / EDGING MACHINE GRINDING WHEEL SERIES



Z001 直边机金刚轮(A型)
Edging machine diamond wheel (Type A)

规格/SIZE	孔径/HOLE	目数/MESH
150×8×8(mm)	12mm, 22mm, 50mm	80#, 100#, 120#, 140#, 180#, 230#
130×8×8(mm)	12mm, 22mm, 50mm	180#, 230#



Z002 直边机金刚轮
Edging machine diamond wheel

规格/SIZE	孔径/HOLE	目数/MESH
150×12×10(mm)	12mm, 22mm, 50mm	80#, 100#, 120#
全齿 (Full segment)		



Z003 直边机金刚轮(B型)
Edging machine diamond wheel (Type B)

规格/SIZE	孔径/HOLE	目数/MESH
150×10×10(mm)	12mm, 22mm, 50mm	80#, 100#, 120#, 140#, 180#, 240#
150×8×8(mm)	12mm, 22mm, 50mm	80#, 100#, 120#, 140#, 180#, 240#
130×10×10(mm)	12mm, 22mm, 50mm	180#, 240#
130×8×8(mm)	12mm, 22mm, 50mm	



Z004 直边机金刚轮(C型)
Edging machine diamond wheel (Type C)

规格/SIZE	孔径/HOLE	目数/MESH
150×8×8(mm)	12mm, 22mm, 50mm	80#, 100#, 120#, 140#, 180#, 240#
130×8×8(mm)	12mm, 22mm, 50mm	180#, 240#



Z005 直边机金刚轮(D型)
Edging machine diamond wheel (Type D)

规格/SIZE	孔径/HOLE	目数/MESH
150×8×8(mm)	12mm, 22mm, 50mm	80#, 100#, 120#, 140#, 180#, 240#
130×8×8(mm)	12mm, 22mm, 50mm	180#, 240#



Z006 直边树脂轮(A型)
Edging machine resin wheel (Type A)

规格/SIZE	孔径/HOLE	目数/MESH
150×10×10(mm)	12mm, 22mm, 50mm	180#, 240#, 320#
130×10×10(mm)	12mm, 22mm, 50mm	

03 直边机系列 EDGING MACHINE SERIES

直边机磨轮系列 / EDGING MACHINE GRINDING WHEEL SERIES



Z007 直边树脂磨轮(A型) 颜色(红/绿)
Edging machine resin wheel(Type A) Color (red/green)

规格/SIZE	孔径/HOLE	目数/MESH
150(130)×15×10(mm)	12mm, 22mm, 50mm	180#, 240#, 320#
150(130)×15×12(mm)	12mm, 22mm, 50mm	180#, 240#, 320#
150(130)×15×15(mm)	12mm, 22mm, 50mm	180#, 240#, 320#
150(130)×20×10(mm)	12mm, 22mm, 50mm	180#, 240#, 320#

Z008 直边树脂磨轮(B型) 颜色(红/绿)
Edging machine resin wheel(Type B) Color (red/green)

规格/SIZE	孔径/HOLE	目数/MESH
150(130)×15×10(mm)	12mm, 22mm, 50mm	180#, 240#, 320#
150(130)×15×12(mm)	12mm, 22mm, 50mm	180#, 240#, 320#
150(130)×15×15(mm)	12mm, 22mm, 50mm	180#, 240#, 320#
150(130)×20×10(mm)	12mm, 22mm, 50mm	180#, 240#, 320#



Z009 直边树脂磨轮(B型)
颜色(红/绿)
Edging machine resin wheel (Type B) Color (red/green)
规格/SIZE : 150×70×10(mm)
孔径/HOLE : 12mm, 22mm, 50mm
目数/MESH : 180#, 240#, 320#



Z010 直边树脂磨轮(B型)
颜色(红/绿)
Edging machine resin wheel (Type B) Color (red/green)
规格/SIZE : 130×10×10(mm)
孔径/HOLE : 12mm, 22mm, 50mm



Z011 树脂石头轮
Resin stone wheel
规格/SIZE : 130×20×22(mm)
孔径/HOLE : 12mm
目数/MESH : 80#



Z012 进口10S水松抛光轮
Import 10S polish wheel
规格/SIZE : 150×70×40(mm)
150×70×30(mm)
130×60×35(mm)
目数/MESH : 10S40, 10S60, 10S80



Z013 10S水松抛光轮
10S polish wheel
规格/SIZE : 150×70×40(mm)
150×70×30(mm)
130×60×35(mm)
目数/MESH : 10S40, 10S60, 10S80



Z014 10S水松抛光轮
10S polish wheel
规格/SIZE : 150×70×40(mm)
150×70×30(mm)
130×60×35(mm)
目数/MESH : 10S40, 10S60, 10S80



Z015 10S水松抛光轮
10S polish wheel
规格/SIZE : 150×70×40(mm)
150×70×30(mm)
130×60×35(mm)
目数/MESH : 10S40, 10S60, 10S80



Z016 10S水松抛光轮
10S polish wheel
规格/SIZE : 150×70×40(mm)
150×70×30(mm)
130×60×35(mm)
目数/MESH : 10S40, 10S60, 10S80

03 直边机系列 EDGING MACHINE SERIES

直边机磨轮系列 / EDGING MACHINE GRINDING WHEEL SERIES



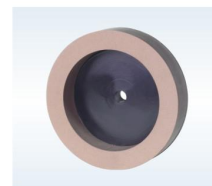
Z017 BK轮
BK wheel
规格/SIZE : 150×70×40(mm)
130×60×35(mm)
目数/MESH : 60#, 80#, 120#, 180#



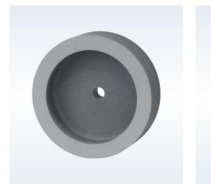
Z018 BK轮
BK wheel
规格/SIZE : 150×70×40(mm)
130×60×35(mm)
目数/MESH : 60#, 80#, 120#, 180#



Z019 连底BD
BD wheel with bottom
规格/SIZE : 150×12×40(mm)
130×12×35(mm)



Z020 连底BD
BD wheel with bottom
规格/SIZE : 150×12×40(mm)
130×12×35(mm)



Z021 石头轮
Stone wheel
规格/SIZE : 150×12×40(mm)
130×12×35(mm)



Z022 进口X3000
Import X3000 wheel
规格/SIZE : 150×70×30(mm)

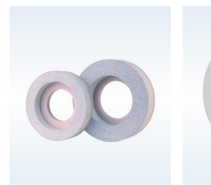


Z023 进口X5000
Import X5000 wheel
规格/SIZE : 150×70×30(mm)



Z024 X8000
X8000 wheel
规格/SIZE : 150×70×30(mm)

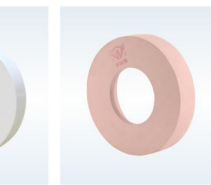
Z025 X3000, X5000
X3000, X5000 wheel
规格/SIZE : 150×70×35(mm)



ZJ026 CE-3
规格/SIZE : 150×70×40(mm)
130×60×35(mm)
130×60×30(mm)



ZJ027 国产X3000
X3000 wheel
规格/SIZE : 150×70×30(mm)



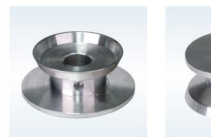
ZJ028 国产X5000
X5000 wheel
规格/SIZE : 150×70×30(mm)



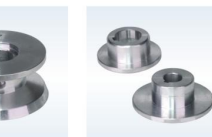
ZJ028 X088
规格/SIZE : 150×70×30(mm)

03 直边机系列 EDGING MACHINE SERIES

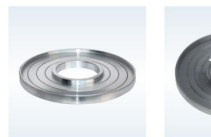
直边机配件系列 EDGING MACHINE SPARE PART SERIES



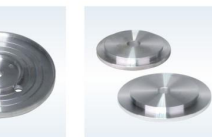
Z027 铝座
Alu. base
规格/SIZE : 150(130)(mm)



Z028 铝座
Alu. base
规格/SIZE : 100(mm)

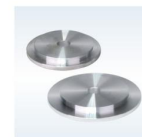


Z029 铝压盖
Alu. cover
规格/SIZE : 90, 70(mm)



Z030 铝盘
Alu. plate
规格/SIZE : 150×50(mm)
130×50(mm)

Z031 铝盘
Alu. plate
规格/SIZE : 150×50(mm)
130×50(mm)



Z032 抛光轮铝压片
Polish wheel's alu. sheet
规格/SIZE : 90, 70(mm)

03 直边机系列

EDGING MACHINE SERIES

直边机配件系列 / EDGING MACHINE SPARE PART SERIES



Z033 防水套
Water proof cover
规格/SIZE :
Φ130×Φ70(mm)

Z034 防水套
Water proof cover
规格/SIZE : 100(mm)

Z035 直边机后压板
Edging machine
back pad

Z036 直边机前压板
Edging machine
back pad

Z037 华天直边机压板
Huatian edging
machine pad



Z038 直边机前板胶条
Edging machine
front pad rubber

Z039 实心胶条
Solid rubber strip

Z040 输送链条
Conveying chain
规格/SIZE :
120节(120 section)
126节(126 section)

Z041 直边机铁链条
Edging machine
iron chain

Z042 直边机链扣
Edging machine
chain knot



Z043 万向水管
Universal water pipe
规格/SIZE : 小, 中, 大
Small, middle, big

Z044 铜三通
Copper T pipe

Z045 棚架轮
Rubber wheel on
support track

Z046 棚架螺丝
Screw on
support track

Z047 伞齿
Gear

Z048 伞齿
Gear



Z049 数字显示器
Number readout

Z050 胶手柄
Plastic handle

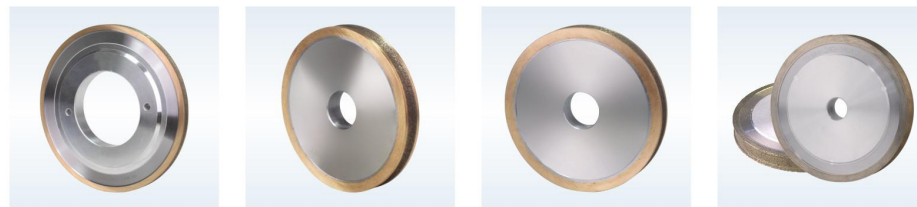
Z051 T形胶
Back Rubber Pad For
Edging Machine

Z052 T形胶
Back Rubber Pad For
Edging Machine

Z053 实心胶
Front rubber pad for
Edging machine

04 异形机系列

SHAPE EDGE BEVELING MACHINE SERIES



Y001 太阳能磨轮
Solar energy glass
grinding wheel

规格/SIZE : Φ200×3.2(mm)
Φ200×4(mm)
孔径/HOLE : 22mm, 50mm, 90mm
目数/MESH : 100#, 120#, 150#, 240#

Y002 异形圆(直)边金刚轮(A)
Shape round (edging)
diamond wheel (Type A)

规格/SIZE : Φ150×2-25(mm)
孔径/HOLE : 22mm, 50mm, 90mm
目数/MESH :
80#, 100#, 120#, 150#, 180#, 240#

Y003 异形圆(直)边金刚轮(A)
Shape round (edging)
diamond wheel (Type A)

规格/SIZE : Φ175×2-25(mm)
孔径/HOLE : 22mm, 50mm, 90mm
目数/MESH :
80#, 100#, 120#, 150#, 180#, 240#

Y004 异形直边金刚轮
Shape edging
diamond wheel

规格/SIZE : Φ150(175)×2-25(mm)
孔径/HOLE : 22mm, 50mm, 90mm
目数/MESH :
80#, 100#, 120#, 150#, 180#, 240#



Y005 异形圆边金刚轮
Shape round diamond wheel

规格/SIZE	孔径/HOLE	目数/MESH
Φ150(175)×2-25(mm)	22mm, 50mm, 90mm	80#, 100#, 120#, 140#, 180#, 240#
Φ100×3-25(mm)	22mm	80#, 100#, 120#, 140#, 180#, 240#
Φ50×3-15(mm)	22mm	80#, 100#, 120#, 140#, 180#, 240#
Φ35×4-12(mm)	22mm	80#, 100#, 120#, 140#, 180#, 240#



Y006 异形鸭咀金刚轮(单级, 双级, 三级)
Shape OG diamond wheel(single, double, triple edge)

规格/SIZE	孔径/HOLE	目数/MESH
Φ150×8-25(mm)	22mm	80#, 100#, 120#, 140#, 180#, 240#
Φ100×8-19(mm)	22mm	80#, 100#, 120#, 140#, 180#, 240#



Y007 1/4圆边金刚轮
1/4 round diamond wheel

规格/SIZE	孔径/HOLE	目数/MESH
Φ150×8-25(mm)	22mm	80#, 100#, 120#, 140#, 180#, 240#
Φ100×8-19(mm)	22mm	80#, 100#, 120#, 140#, 180#, 240#



Y008 鹰咀边
Eagle wheel

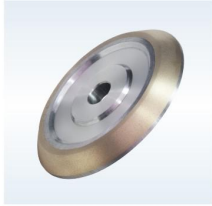
规格/SIZE	孔径/HOLE	目数/MESH
Φ150×8-25(mm)	22mm	80#, 100#, 120#, 140#, 180#, 240#
Φ100×8-19(mm)	22mm	80#, 100#, 120#, 140#, 180#, 240#



Y049 高速四边磨边金刚轮
Four sides edging machine
diamond wheel

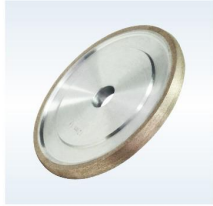
规格/SIZE	目数/MESH
Φ150×10×P22	320#

04 异形机系列 SHAPE EDGE BEVELING MACHINE SERIES



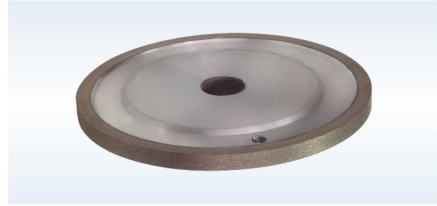
Y009 45度斜坡轮
45° bevel wheel

规格/SIZE : $\Phi 150 \times 10 - 19$ (mm)
孔径/HOLE : 22mm
目数/MESH : 80#, 100#, 120#, 150#, 180#, 240#



Y010 雕刻金钢轮
Engraving machine diamond wheel

规格/SIZE : $\Phi 150 \times V3 - V15$ (mm)
孔径/HOLE : 22mm
目数/MESH : 80#, 100#, 120#, 150#, 180#, 240#



Y011 平行金钢轮
Flat edge wheel

规格/SIZE	孔径/HOLE	目数/MESH
$\Phi 150 \times 4 - 25$ (mm)	22mm	80#, 100#, 120#, 140#, 180#, 240#
$\Phi 200 \times 12 \times 15$ (mm)	22mm, 40mm, 90mm	80#, 100#, 120#, 140#, 180#, 240#



Y012 CNC周齿轮
CNC gear wheel

规格/SIZE	孔径/HOLE	目数/MESH
$\Phi 100 \times 15 \times 12$ (mm)	22mm, 40mm, 90mm	100#, 150#, 180#
$\Phi 80 \times 15 \times 12$ (mm)	22mm, 40mm, 90mm	100#, 150#, 180#
$\Phi 50 \times 15 \times 12$ (mm)	22mm, 40mm, 90mm	100#, 150#, 180#



Y013 CNC圆, 直边轮
CNC round, edging wheel

规格/SIZE	孔径/HOLE	目数/MESH
$\Phi 100 \times 15 \times 12$ (mm)	22mm	100#, 150#, 180#, 240#
$\Phi 80 \times 15 \times 12$ (mm)	22mm	100#, 150#, 180#, 240#
$\Phi 50 \times 15 \times 12$ (mm)	22mm	100#, 150#, 180#, 240#



Y014 异形磨斜边金钢轮
Shape beveling diamond wheel

规格/SIZE	孔径/HOLE	目数/MESH
$150 \times 6 \times 12$ (mm)	12mm, 22mm	80#, 140#, 180#



Y015 异形磨斜边三色树脂轮
Shape beveling three color resin wheel

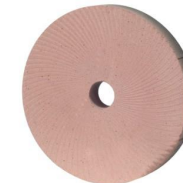
规格/SIZE	孔径/HOLE
$150 \times 15 \times 10$ (mm)	12mm, 22mm

04 异形机系列 SHAPE EDGE BEVELING MACHINE SERIES



Y016 进口BK轮
Import BK polishing wheel

目数/MESH : 46#, 60#
用于异型机磨斜边的抛光
(For Polishing Of Shape Machine)



Y017 BD抛光轮
BD polish wheel

规格/SIZE	厚度/Thickness	孔径/HOLE
$\Phi 100 \times (15, 20, 25, 30)$ (mm)	22mm	22mm
$\Phi 150 \times (15, 20, 25, 30)$ (mm)	22mm	22mm
$\Phi 200 \times (15, 20, 25, 30)$ (mm)	22mm, 90mm	22mm



Y018 BD抛光轮
BD polish wheel

规格/SIZE	厚度/Thickness	孔径/HOLE
$\Phi 100 \times (15, 20, 25, 30)$ (mm)	22mm	22mm
$\Phi 150 \times (15, 20, 25, 30)$ (mm)	22mm	22mm
$\Phi 200 \times (15, 20, 25, 30)$ (mm)	22mm, 90mm	22mm



Y019 BD抛光轮
BD polish wheel

规格/SIZE	厚度/Thickness	孔径/HOLE
$\Phi 100 \times (15, 20, 25, 30)$ (mm)	22mm	22mm
$\Phi 150 \times (15, 20, 25, 30)$ (mm)	22mm	22mm
$\Phi 200 \times (15, 20, 25, 30)$ (mm)	22mm, 90mm	22mm



Y020 BD抛光轮
BD polish wheel

规格/SIZE	厚度/Thickness	孔径/HOLE
$\Phi 100 \times (15, 20, 25, 30)$ (mm)	22mm	22mm
$\Phi 150 \times (15, 20, 25, 30)$ (mm)	22mm	22mm
$\Phi 200 \times (15, 20, 25, 30)$ (mm)	22mm, 90mm	22mm



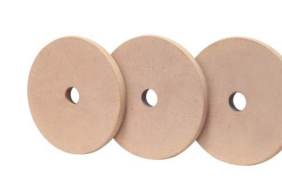
Y021 BD抛光轮
BD polish wheel

规格/SIZE	厚度/Thickness	孔径/HOLE
$\Phi 100 \times (15, 20, 25, 30)$ (mm)	22mm	22mm
$\Phi 150 \times (15, 20, 25, 30)$ (mm)	22mm	22mm
$\Phi 200 \times (15, 20, 25, 30)$ (mm)	22mm, 90mm	22mm



Y022 BD抛光轮
BD polish wheel

规格/SIZE	厚度/Thickness	孔径/HOLE
$\Phi 100 \times (15, 20, 25, 30)$ (mm)	22mm	22mm
$\Phi 150 \times (15, 20, 25, 30)$ (mm)	22mm	22mm
$\Phi 200 \times (15, 20, 25, 30)$ (mm)	22mm, 90mm	22mm



Y023 雕刻抛光片
Engraving polish wheel

规格/SIZE	孔径/HOLE
$\Phi 150 \times V5 - V30$ (mm)	22mm, 90mm
$\Phi 165 \times V3 - V15$ (mm)	22mm, 90mm
$\Phi 175 \times V3 - V15$ (mm)	22mm, 90mm



Y024 抛光机专用纯羊毛轮
Polish machine felt wheel

规格/SIZE
$200(150) \times 22 \times 40$ (mm)

04 异形机系列
SHAPE EDGE BEVELING MACHINE SERIES



Y025 BK抛光轮
BK polish wheel

规格/SIZE :
Φ150×Φ22×(15, 20, 25, 30)(mm)
Φ200×Φ22(90)×15×20, 25, 30(mm)
目数/MESH : 46#,60#,90#,120#,180#



Y026 BK抛光轮
BK polish wheel

规格/SIZE :
Φ150×Φ22×(15, 20, 25, 30)(mm)
Φ200×Φ22(90)×15×20, 25, 30(mm)
目数/MESH : 46#,60#,90#,120#,180#



Y027 BK抛光轮
BK polish wheel

规格/SIZE :
Φ150×Φ22×(15,20,25,30)(mm)
Φ200×Φ22(90)×15×20, 25, 30(mm)
目数/MESH : 46#,60#,90#,120#,180#



Y028 铝小吸盘座
Alu.suction seat



Y029 塑料吸盘座
Plastic suction seat



Y030 尼龙吸盘座
Nylon suction seat



Y031 小孔小吸盘
Small hole sucker



Y032 大孔小吸盘
Big hole sucker



Y033 小小吸盘
Smallest sucker



Y034 吸盘垫
Suction pad



Y035 小胶粒
Small particles



Y036 大胶粒
Large particles

04 异形机系列
SHAPE EDGE BEVELING MACHINE SERIES



Y037 异形机托靠轮支架
Support wheel racket



Y038 异形机靠轮
Shape edger support wheel



Y039 异形机靠轮
Shape edger support wheel



Y040 异形磨斜边顶轮
Bevel process support wheel



Y041 异形磨斜边顶轮
Bevel process support wheel



Y042 异形磨斜边顶轮
Bevel process support wheel



Y043 顶轮盖
Support wheel cover



Y044 顶轮盖
Support wheel cover



Y045 推拉阀
Sliding valve



Y046 进口真空发生器
Import vacuum generator



Y047 双通气管接头
Double pass air pipe connector



Y048 水管
Pipe

05 钻孔机系列 DRILLING MACHINE SERIES



K001 铣刀
Milling cutter
规格/SIZE : $\Phi 8\text{mm}-\Phi 26$



K002 整体圆直边小磨头
Integral round straight grinding head
规格/SIZE : $\Phi 15\text{mm}-\Phi 25\text{mm}$



K003 整体钻头
Solid drill
规格/SIZE : $\Phi 5\text{mm}-\Phi 100\text{mm}$



K004 直柄钻头
straight shank drill
规格/SIZE : $\Phi 3\text{mm}-\Phi 130\text{mm}$



K005 锥柄钻头/倒角套
Taper-shank drill/Set chamfer
规格/SIZE : $\Phi 3\text{mm}-\Phi 130\text{mm}$



K006 锥形小磨头
Taper grinding head
规格/SIZE : $\Phi 8\text{mm}-\Phi 80\text{mm}$



K007 钻盘
Drilling plate
规格/SIZE : $\Phi (200, 260, 300)\text{mm}$



K008 钻孔机铜水咀
Copper faucet
规格/SIZE : 单节 (Single section)
两节 (Two section)



K009 简易钻孔机水咀
Simple water faucet



K010 钻套
Drill bushing
规格/SIZE : 55 , 65 , 75(mm)



K011 钻孔机回弹弹簧
Drilling machine return spring



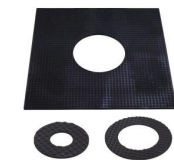
K012 钻孔机皮带轮
Drilling machine dust proof cover



K013 钻孔机防尘罩
Drilling machine



K014 钻孔机万向轮
Drilling machine castor



K015 钻孔机皮垫
Drilling machine leather washer



K016 钻孔机胶钉
Drilling machine plastic nail

06 清洗机系列 WASHING MACHINE SERIES



Q001 清洗机毛刷棒
Washing machine brush roller
规格/SIZE : 600/800/1000/1200/1600/2500(mm)长(Length)
外径/OUTER DIA : $\Phi 55/\Phi 80(\text{mm})$



Q002 清洗机海绵棒
Washing machine sponge roller
规格/SIZE : 600/800/1000/1200/1600/2500(mm)长(Length)
外径/OUTER DIA : $\Phi 55/\Phi 80(\text{mm})$



Q003 橡胶棒 (黑)
Rubber roller(black)
规格/SIZE : 600/800/1000/1200/1600/2500(mm)长(Length)
外径/OUTER DIA : $\Phi 55/\Phi 80(\text{mm})$



Q004 橡胶棒 (橙)
Rubber roller(orange)
规格/SIZE : 600/800/1000/1200/1600/2500(mm)长(Length)
外径/OUTER DIA : $\Phi 55/\Phi 80(\text{mm})$



Q005 铁链条
Iron chain



Q006 清洗机轴承套
Washing machine bearing seat



Q007 清洗机轴承套
Washing machine bearing seat



Q008 清洗机轴承套
Washing machine bearing seat



Q009 清洗机轴承套
Washing machine bearing seat



Q010 清洗机胶齿轮
Washing machine plastic gear



Q011 清洗机胶齿轮
Washing machine plastic gear



Q012 清洗机胶齿轮
Washing machine plastic gear

07 喷砂机配件系列
SANDBLASTING MACHINE SPARE PARTS SERIES



PS001 全自动喷砂枪
Auto sandblasting gun



PS002 简易喷砂枪
Simple sandblasting gun



PS003 简易喷砂枪
Simple sandblasting gun



PS004 喷砂枪
Sandblasting gun



PS005 钨钢枪咀
Tungsten carbide gun nozzle



PS006 碳化硼枪咀
Boron carbide gun nozzle



PS007 陶瓷枪咀
Ceramic gun nozzle



PS008 陶瓷枪咀
Ceramic gun nozzle



PS009 喷砂机大胶轮
Sandblasting machine big wheel



PS010 喷砂用金刚砂
Blasting sand
规格/SIZE: A级, B级
(Grade A, Grade B) (30, 40, 60)

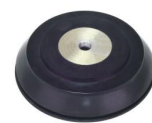


PS011 砂带
Abrasive belts for glass
Grinding (silicone carbide)

08 机械配件系列
MACHINE SPARE PARTS SERIES



P001 上片台吸盘 (分体)
Loading table sucker
(split type)
规格/SIZE: $\Phi 205 \times \Phi 16$ (mm)



P002 上片台吸盘 (带铝芯)
Loading table sucker
(with alu.core)
规格/SIZE: $\Phi 205 \times \Phi 16$ (mm)



P003 上片台吸盘 (带铝芯)
Loading table sucker
(with alu.core)
规格/SIZE: $\Phi 150 \times \Phi 16$ (mm)



P004 硅胶上片台吸盘(带铝芯)
Silica gel loading table sucker
(with alu.core)
规格/SIZE: $\Phi 150 \times \Phi 16$ (mm)



P005 硅胶小吸盘
Silica gel sucker
规格/SIZE: $\Phi 30$ mm



P006 吊架吸盘
Hanger sucker
规格/SIZE: $\Phi 205 \times \Phi 16$ (mm)



P007 手移吸盘
Hand sucker
规格/SIZE: $\Phi 285$ mm



P008 切割吸盘
Cutting table sucker
规格/SIZE: $\Phi 285$ mm



P009 上片吸盘进气总成
Loading table sucker's inlet assembly



P010 上片台胶轮
Loading table rubber wheel
规格/SIZE: $\Phi 120 \times \Phi 26$ (mm)



P011 上片台胶轮
Loading table rubber wheel
规格/SIZE: $\Phi 120 \times \Phi 26$ (mm)



P012 切割机气囊
Cutting machine air bag



P013 农机AB胶
AB glue



P014 高温绳
High temperature rope



P015 编码器
Encoder



P016 齿轮
Gear
规格/SIZE: 各规格可定做
(Each size can order)



P017 蜗轮箱铜齿轮
Wormwheel box copper gear



P018 机械传动皮带
Mechanical transmit belt



P019 万向轴
Cardan shaft

09 电动工具系列 ELECTRIC TOOLS SERIES



D001 无极调速机
Stepless regulator
规格/SIZE : 2.2 KW , 1.5 KW



D002 ABB电机
ABB motor
规格/SIZE : 1.5 KW , 2.2 KW



D003 直边机电机
Edging machine motor
规格/SIZE : 1.5 KW , 2.2 KW



D004 异形机双速电机
Shape edging machine
double speed motor
规格/SIZE : 1.3-1.8 KW , 1.8-2.2 KW



D005 水泵
Water pump
规格/SIZE : 125W , 150W , 250W ,
400W , 500W



D006 便捷式钻孔机
Portable drilling machine



D007 手提抛光机
Portable drilling machine



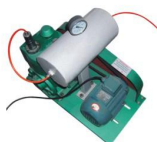
D008 抛光机铝手柄
Polish machine alu. handle



D009 手提磨边机
Portable grinding machine



D010 进口手提切割机
Import portable
cutting machine



D011 异形机用真空泵
Shape edging machine's
vacuum pump



D012 除膜机
Membrane removal
machines



D013 注油式异形切割台
Oiling type
cutting machine



D014 注油式划圆台
Oiling type partition table



D015 无极配件
Stepless regulator
spare parts



D016 电机风叶
Motor fan

10 刀具系列 CUTTING TOOL SERIES



T001 韩国进口铜柄玻璃刀
Korea import copper
handle glass cutter
规格/SIZE : H12mm-19mm



T002 韩国进口胶柄玻璃刀
Korea import plastic
handle glass cutter
规格/SIZE : 12mm-19mm , 12mm以下(Below 12mm)



T003 日研玻璃刀
Nikken glass cutter
规格/SIZE : 15mm-19mm



T004 日研玻璃刀
Nikken glass cutter
规格/SIZE : 0.2mm-2mm , F3mm-5mm
T6mm-12mm , S12mm-15mm



T005 玻璃刀
Glass cutter



T006 玻璃刀
Glass cutter



T007 玻璃刀
Glass cutter



T008 韩国进口推刀
Korea import push broach
规格/SIZE : 60/90/120/150/180/210(mm)



T009 推刀
Push broach
规格/SIZE : 60/90/120/150/180/210(mm)



T010 六角圆规刀
Six corner compasses knife



T011 注油圆规刀
Oiling compasses knife



G034 毛毡
Felt

10 刀具系列 CUTTING TOOL SERIES



T012 推刀油缸
Knife pushing cylinder



T013 推刀油缸
Knife pushing cylinder



T014 六角圆规刀头总成
Six corner compasses knife head assembly



T015 吸盘总成
Sucker assembly



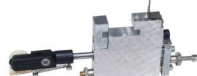
T016 韩国进口刀头
Korea imported cutter head



T017 推刀头
Korea imported cutter head



T018 推刀头
Push knife head



T019 切割台刀盒
Cutting table knife box



T020 U型刀夹
U cutter holder



T021 异形切割台刀头
Shape cutter head



T022 推刀尺条
Push knife ruler



T023 推刀导轮座
Push knife wheel seat



T024 推刀导轮座
Push knife wheel seat



T025 异形切割台刀头
Shape cutter head

11 吸盘工具系列 SUCKING TOOLS SERIES



XP001 四爪吸盘
Four jaw chuck
规格/SIZE : 活动 (Active)
最大吸力/Max.suction : 230KG



XP002 四爪吸盘
Four jaw chuck
最大吸力/Max.suction : 220KG



XP003 三爪吸盘
Three jaw chuck
规格/SIZE : 活动 (Active)
最大吸力/Max.suction : 210KG



XP004 三爪吸力王
Three claw suction King
最大吸力/Max.suction : 210KG



XP005 三爪吸盘
Three jaw chuck
最大吸力/Max.suction : 150KG



XP006 三爪吸盘
Three jaw chuck
最大吸力/Max.suction : 130KG



XP007 两爪吸盘
Two jaw chuck
规格/SIZE : 可吸弧形玻璃
(Can suck curved glass)
最大吸力/Max.suction : 80KG



XP008 两爪吸盘
Two jaw chuck
最大吸力/Max.suction : 140KG



XP009 角度可调吸盘
Angle adjustable chuck
规格/SIZE : 可调 (Can adjust) 90°-270°
胶盘直径 (Rubber disc dia) 118mm
最大吸力/Max.suction : 35KG



XP010 角度可调吸盘
Angle adjustable chuck
规格/SIZE : 可调 (Can adjust) 45°-270°
最大吸力/Max.suction : 35KG

11 吸盘工具系列 SUCKING TOOLS SERIES



XP011 直角吸盘
Rectangular sucking disc
规格/SIZE: 胶盘直径 (Rubber disc dia) 118mm
最大吸力/Max.suction: 35KG



XP012 直角吸盘
Rectangular sucking disc
规格/SIZE: 胶盘直径 (Rubber disc dia) 56mm
最大吸力/Max.suction: 8KG



XP013 直角吸盘
Rectangular sucking disc
规格/SIZE: 胶盘直径 (Rubber disc dia) 56mm
最大吸力/Max.suction: 8KG



XP014 手泵式单爪吸盘
Hand pump single suction
规格/SIZE: 胶盘直径 (Rubber disc dia) 206mm
最大吸力/Max.suction: 50KG



XP015 手泵式单爪吸盘
Hand pump single suction
规格/SIZE: 胶盘直径 (Rubber disc dia) 206mm
最大吸力/Max.Suction: 50KG



XP016 手泵式单爪弧形吸盘
Hand pump type
single paw arc sucker



XP017 手提式单爪吸盘
Portable single sucker



XP018 单爪吸盘
Single sucker



XP019 吸盘总成
Chuck assembly

12 无影胶系列 UV GLUE SERIES



J001 进口金邦无影胶
Import Kingmax UV glue
规格/SIZE: 稀(Thin), 浓(Thick)



J002 进口无影胶
Import kingmax UV glue
规格/SIZE: 7600, 7400, 7100



J003 鹰头无影胶
Eagle brand UV glue



J004 5638无影胶
5638 UV glue



J005 夹胶水
Laminated glass glue



J006 灯罩型无影灯
Lampshade type UV lamp
其它/OTHER: 125W



J007 双管无影灯
Dual tube UV lamp
规格/SIZE: 60mm
其它/OTHER: 40W



J008 双管无影灯
Dual tube UV lamp
规格/SIZE: 30mm
其它/OTHER: 40W



J009 无影灯管
UV lamp



J010 无影灯泡
UV bulb



J011 锡面灯
Tin lamp



J012 油漆固化剂
Painting Hardening agent



J013 锡面灯
Tin lamp



J014 钢化检测仪
Toughened detector



J015 钢化手电筒
Toughened flashlight

13 工具系列
TOOL SERIES



G001 分边钳
Edge clamp



G002 重力分边钳
Locking pliers



G003 简易分边钳
Simple pliers



G004 平口修边钳
Flat mouth trimming pliers



G005 弯口钳
Bending pliers



G006 平口修边剪
Flat side trimming shear



G007 大头修边钳 (黄)
Trimming pliers (yellow)



G008 大头修边钳 (红)
Trimming pliers (red)



G009 平口修边剪
Flat side trimming shear



G010 花边钳
Lace clamp



G011 青铜锯片
Bronze blade
型号/MODEL : $\Phi 80/100/110(\text{mm})$



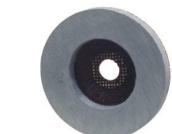
G012 金刚石磨片
Diamond abrasive disc
型号/MODEL : $\Phi 80(\text{mm})$



G013 电镀磨片
Electroplating
abrasive disc



G014 金钢石磨盘
Diamond abrasive disc
型号/MODEL : $300 \times 22 \times 5\text{mm}$



G015 海绵抛光片
Sponge polishing sheet
型号/MODEL : 120#, 220#, 400#



G016 纯羊毛抛光片
Flat mouth trimming pliers
型号/MODEL : $\Phi 80(\text{mm})$

13 工具系列
TOOL SERIES



G017 软木垫
Soft pad



G018 钢丝绵
Steel wool
型号/MODEL : 0000



G019 U型胶夹
U type plastic clip



G020 护角
Angle bead



G021 双手搬运夹
Hands carrying clamp



G022 单手搬运夹
Single hand
carrying clamp



G023 吊夹
Suspension clamp
型号/MODEL : 500KG/1000KG



G024 护腕
Wristor



G025 防滑手套
Anti-slip gloves



G026 电镀钻头
Electroplated bit
型号/MODEL : $\Phi 3\text{mm}-120\text{mm}$



G027 青铜钻片
Bronze drilling



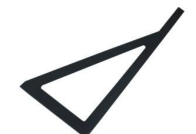
G031 钻石微粉
应用领域：
1. 光学镜片、硬质玻璃和晶体领域的超精密研磨和抛光。
2. 超硬陶瓷和合金、磁头、硬盘、芯片等制品的研磨和精加工。
3. 红、蓝宝石加工。



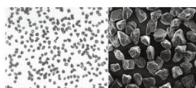
G028 L型尺
L ruler
型号/MODEL : 300/600/1200/1500/2000(mm)



G029 三角尺
Triangular ruler
型号/MODEL : 300/600/1200/1500/2000(mm)



G030 三角尺
Triangular ruler
型号/MODEL : 300/600/1200/1500/2000(mm)



G032 单晶钻石微粉 (W粉)
W粉的加工效率和耐用性比一般钻石粉高30%以上。较窄的粒度范围，可以获得较高的光洁度和表面质量。可供粒度范围W0.25 - W60。

G033 多晶钻石微粉 (M粉、P粉)
多晶钻石微粉特点为脆性，具有柔和的研磨和抛光作用。可供粒度范围M 0.25 - M 60 P 0.15 - P 12。